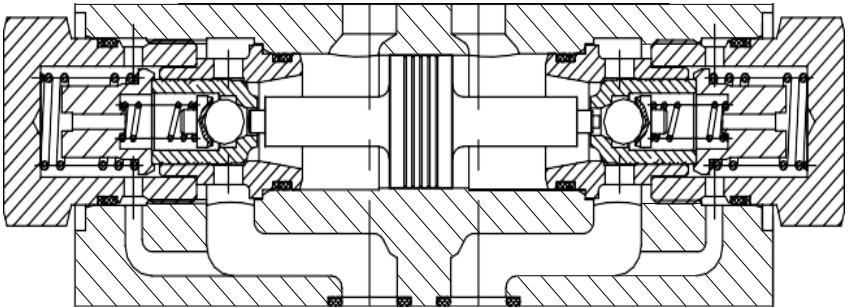




# HYDROWEST

## Modular Hydraulic Operated Check Valve

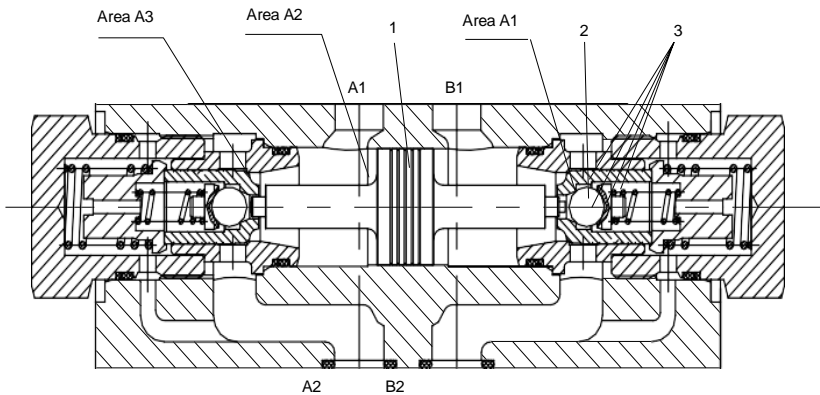


## Function and configuration

Z2S22 type valve is a releasable check valve in sandwich plate design. It is used for the leakage-free closure of one or two ports, also in case of long periods of time.

Fluid flows freely from A1 to A2 or B1 to B2. Flow in the opposite direction is blocked. When fluid flows from A1 to A2, the spool (1) is pressurised and is pushed to the right, thereby opening the ball poppet valve (2) which then opens the check valve (3).

In order to make the reliable closure of the two check valves in the neutral position, the service ports A1 and B1 must be connected to tank.



**Z2S22...modular hydraulic check valve**

- 1 Spool      2 Ball poppet valve      3 Check valve

## Technical data

Fluid	Mineral oil suitable for NBR and FKM seal Phosphate ester for FKM seal	
Degree of contamination	Maximum permissible degree of fluid contamination: Class 9. NAS 1638 or 20/18/15, ISO4406	
Fluid temperature range	°C	-30 to +80 (NBR seal) -20 to +80 (FKM seal)
Viscosity range	mm <sup>2</sup> /s	2.8 to 500
Operating pressure	bar	315
Max.flow-rate	L/min	360
Flow direction	See symbol	
Crack pressure(free flow direction)	bar	1.5, 3, 6, 10
Area ratio	A1/A2=1/13.4 A3/A2=1/2.68 (Please refer to page"02/04"for section drawing )	
Weight	kg	6

