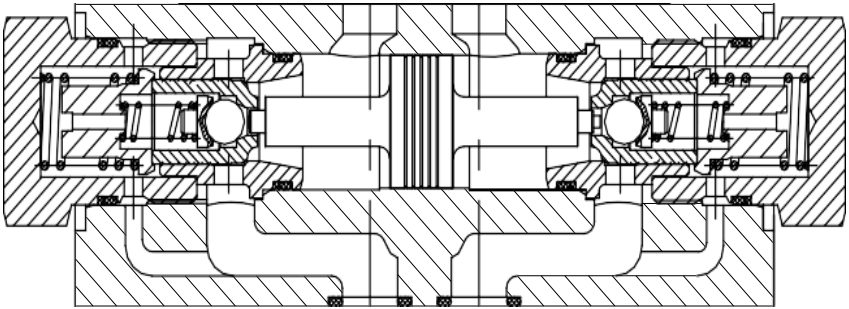




HYDROWEST

Modular Hydraulic Operated Check Valve

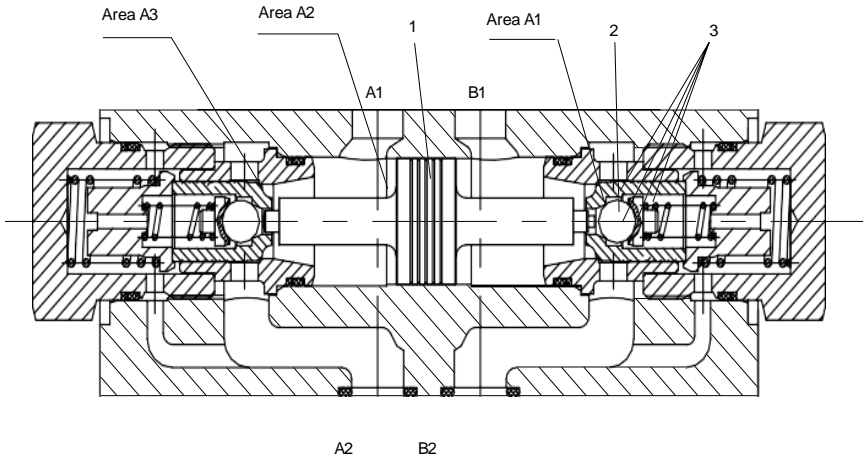


Function and configuration

Z2S16 SERIES ARE PILOT OPERATED CHECK VALVES.

THIS VALVES ARE USED TO SHUT-OFF AN OIL FLOW IN ONE DIRECTION AND ALLOW FREE FLOW IN THE OPPOSITE DIRECTION.

THEY CAN ALSO BE OPENED IN THE DIRECTION OF CLOSURE.

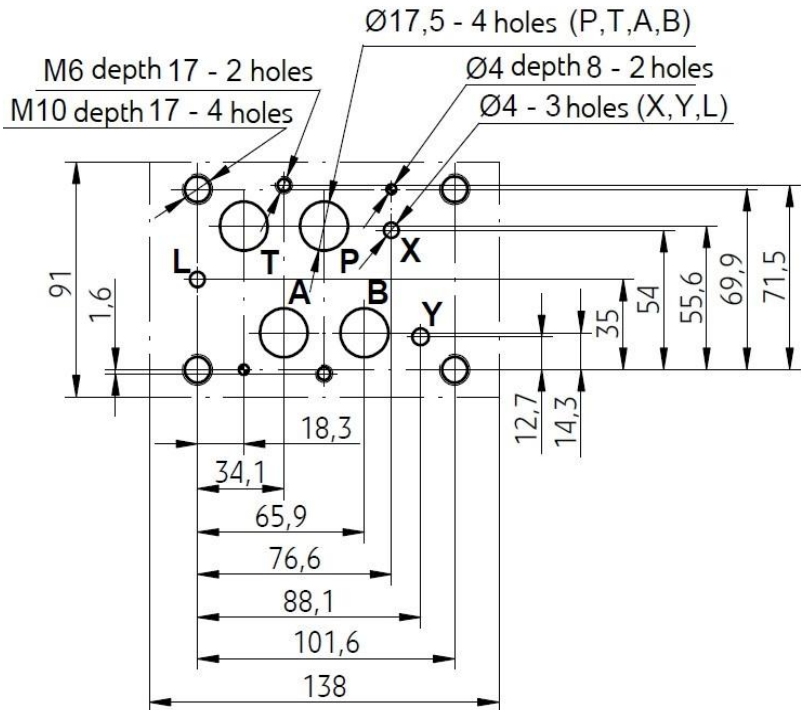


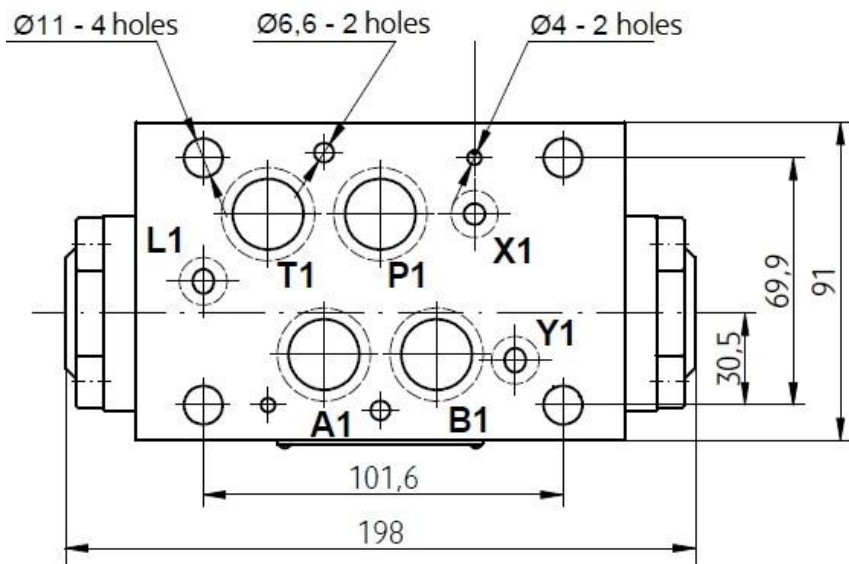
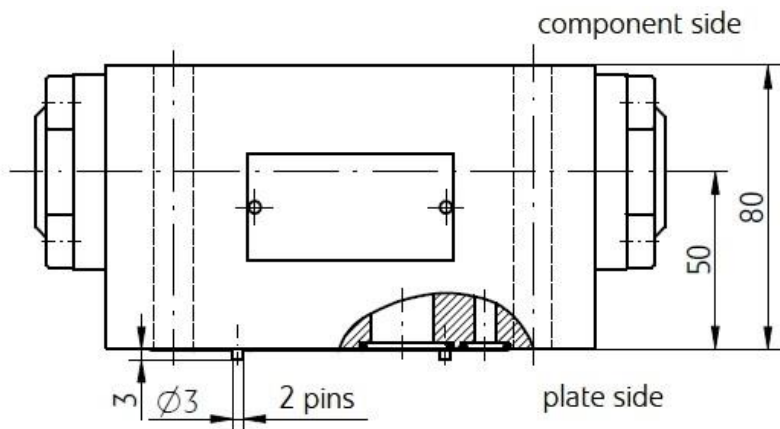
Z2S22...modular hydraulic check valve

1 Spool 2 Ball poppet valve 3 Check valve

Technical data

SIZE	16
OPERATING PRESSURE (MPa)	31.5
MAX. FLOW RATE (L/MIN)	200
FLUID TEMPERATURE (°C)	-30 - 80
WEIGHT (KG)	6.8
VALVE BODY (MATERIAL)	CASTING PHOSPHATING SURFACE





Z25	16		30
-----	----	--	----

16=16 SIZE

NO CODE=PORT A, B WITH CHECK VALVE
 A=PORT A WITH CHECK VALVE
 B=PORT B WITH CHECK VALVE

1=OPENING PRESSURE 0.15 MPA
 2=OPENING PRESSURE 0.3 MPA
 3=OPENING PRESSURE 0.6 MPA

NO CODE=MINERAL
 SUBSTANCE HYDRAULIC OIL
 V=PHOSPHATE EATER
 HYDRAULIC OIL

30=30 SERIES