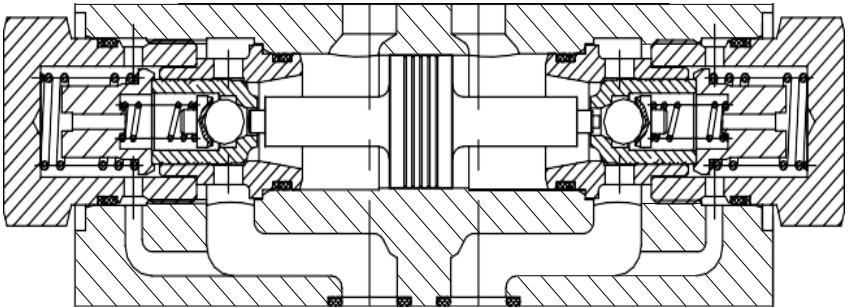




HYDROWEST

Modular Hydraulic Operated Check Valve

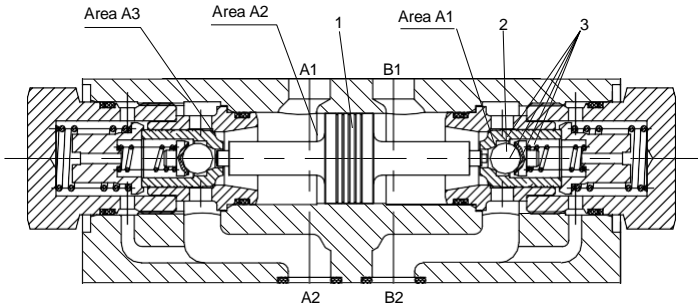


Function and configuration

Z2S10 type valve is a releasable check valve in sandwich plate design. It is used for the leakage-free closure of one or two ports, also in case of long periods of time.

Fluid flows freely from A1 to A2 or B1 to B2. Flow in the opposite direction is blocked. When fluid flows from A1 to A2, the spool (1) is pressurised and is pushed to the right, thereby opening the ball poppet valve (2) which then opens the check valve (3).

In order to make the reliable closure of the two check valves in the neutral position, the service ports A1 and B1 must be connected to tank.

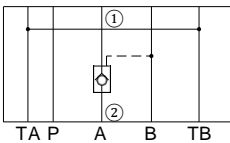


Z2S10..3XJ/...modular hydraulic check valve

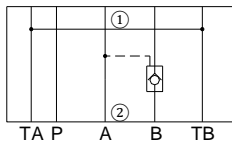
- 1 Spool 2 Ball poppet valve 3 Check valve

Symbols (① =valve side, ② = sub-plate side)

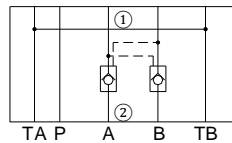
Z2S10A..3XJ/...



Z2S10B..3XJ/...



Z2S10..3XJ/...



Specification

Z2S 10 3XJ / *

Modular Hydraulic check valve

Further details in clear text

Nominal size 10 =10

No code = NBR seals

3XJ= Series 30J to 39J

(30J to 39J): unchanged installation and connection dimensions)

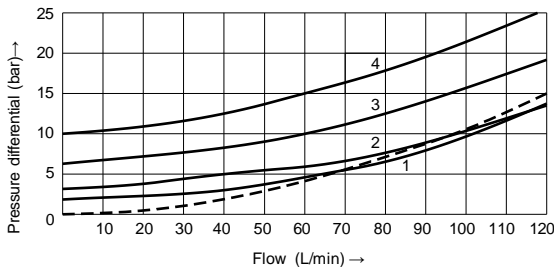
Leak-free closure in channels A and B = -
 Leak-free closure in channel A = A
 Leak-free closure in channel B = B

1 = Crack pressure 1.5bar
 2 = Crack pressure 3bar
 3 = Crack pressure 6bar
 4 = Crack pressure 10bar

Technical data

Fluid		Mineral oil suitable for NBR and FKM seal Phosphate ester for FKM seal
Degree of contamination		Maximum permissible degree of fluid contamination: Class 9. NAS 1638 or 20/18/15, ISO4406
Fluid temperature range	°C	-30 to +80 (NBR seal) -20 to +80 (FKM seal)
Viscosity range	mm ² /s	2.8 to 500
Operating pressure	bar	315
Max.flow-rate	L/min	120
Flow direction		See symbol
Crack pressure (free flow direction)	bar	1.5, 3, 6, 10
Area ratio		A1/A2=1/13.4 A3/A2=1/2.68 (Please refer to page "02/04" for section drawing)
Weight	kg	3

Characteristic curves (Measured at t=40 ±5 °C, using HLP46)

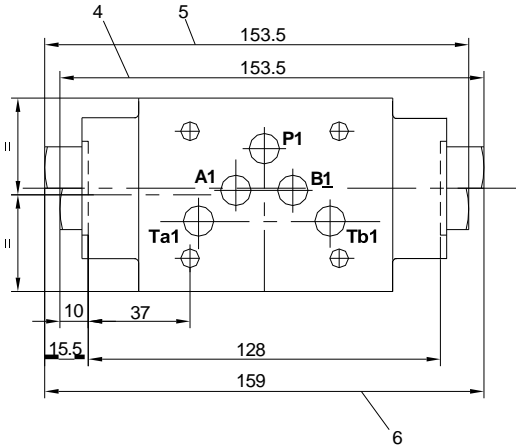
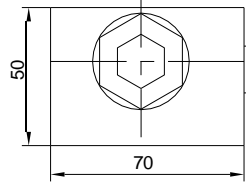
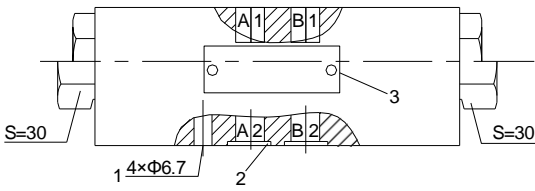


— A → A1; B → B1
 - - A1 → A; B1 → B

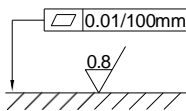
1 Crack pressure 1.5bar
 2 Crack pressure 3bar
 3 Crack pressure 6bar
 4 Crack pressure 10bar

Unit dimensions

(Dimensions in mm)



- 1 4 through holes for valve mounting screws
- 2 O-rings 12×2 for ports A, B, P, T
- 3 Name plate
- 4 Check valve in port B
- 5 Check valve in port A
- 6 Check valve in both port A and B



Requirement for mounting surface

