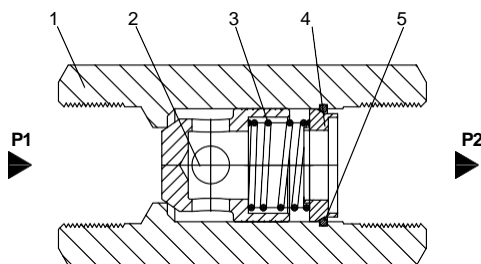




HYDROWEST

S type check valve is used to allow fluid flowing in one direction and leakage-free closure in the opposite direction. When fluid flow via port P1, fluid pushes poppet (2) to move overcoming the spring(3), and connects chamber P1 and P2. When fluid flows from P2 to P1, poppet (2) moves left and the check valve closes.

For check valves without a spring, the fixed position should ensure that the poppet will remain at the closed position.



1. Housing
2. Poppet spool
3. Spring
4. Spring seat
5. Steel wire retaining ring

Specification

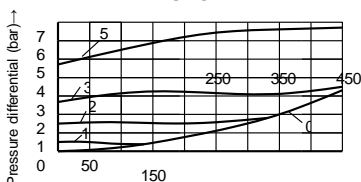
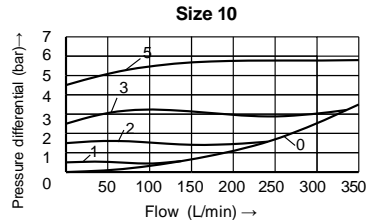
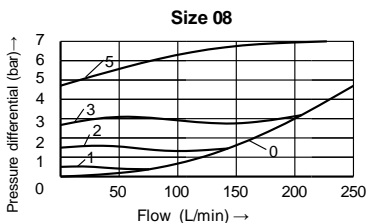
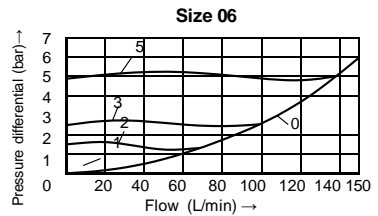
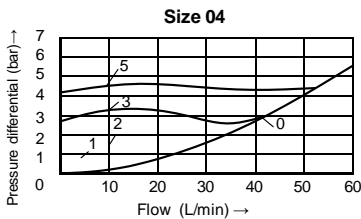
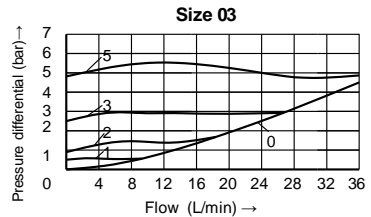
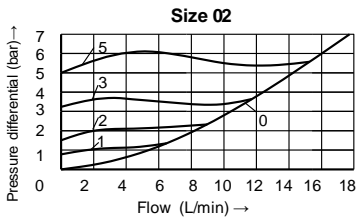
	S			J /		*	
Check valve							Further details in clear text
							Only for sub-plate mounting No code = NBR seals V = FKM seals
							Only for threaded connection 1= G thread 2= Metric thread
							:0J= Threaded connection revision index -2XJ = Sub-plate mounting series 20J to 29J (20J to 29J: unchanged installation and connection dimensions)
							0 = Without spring 1 = Crack pressure 0.5 bar 2 = Crack pressure 1.5bar 3 = Crack pressure 3bar 5 = Crack pressure 5bar

Nominal sizes	Threaded connection	Sub-plate mounting
6	=6	
8	=8	
10	=10	=10
15	=15	
20	=20	=20
25	=25	
30	=30	=30

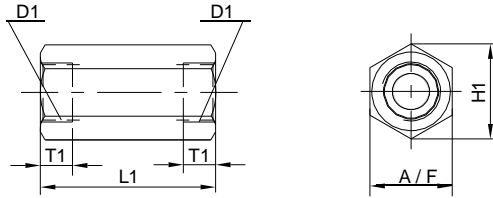
For threaded connection	= A
For sub-plate mounting	= P

Size		02	03	04	06
Max. flow-rate	L/min	15	30	40	120
Max. operating pressure	bar	315, 210 (NPTF1 1/4, NPTF1 1/2)			
Crack pressure	bar	0.5; 1.5; 2; 3; 4; 5			
Fluid		Mineral oil ; Phosphate ester			
Fluid temperature range	°C	-30 to +80			
Viscosity range	mm ² /s	2.8 to 500			
Degree of contamination		Maximum permissible degree of fluid contamination: Class 9. NAS 1638 or 20/18/15, ISO4406			

Characteristic curves (Measured at t=40°C ±5°C , using HLP46)



Size 30



Size	6	8	10	15	20	25	30	
D1	G	G 1/4	G 3/8	G 1/2	G 3/4	G 1	G1 1/4	G1 1/2
	Metric	M14×1.5	M18×1.5	M22×1.5	M27×2	M33×2	M42×2	M48×2
	NPTF	NPTF 1/4	NPTF 3/8	NPTF 1/2	—	—	NPTF 1 1/4	NPTF 1 1/2
	SAE	6SAE (9/16-18)	8SAE (3/4-16)	10SAE (7/8-14)	12SAE (1 1/16-12)	16SAE (1 5/16-12)	20SAE (1 5/8-12)	24SAE (1 7/8-12)
H1	22(SAE=28)	28(SAE=34.5)	34.5	41.5	53	69	75	
L1	58(SAE=68)	58(SAE=70)	72(SAE=85)	85(SAE=98)	98(SAE=108)	120 (SAE=130)	132(SAE=142)	
T1	12(SAE=14)	12(SAE=17)	14(SAE=20)	16(SAE=22)	18(SAE=22)	20 (SAE=22)	22(SAE=24)	
A/F	19(SAE=24)	24(SAE=30)	30	36	46	60	65	
Weight(kg)	0.1(SAE=0.23)	0.2(SAE=0.29)	0.3(SAE=0.35)	0.5(SAE=0.58)	1(SAE=1.1)	2(SAE=2.2)	2.5(SAE=2.7)	